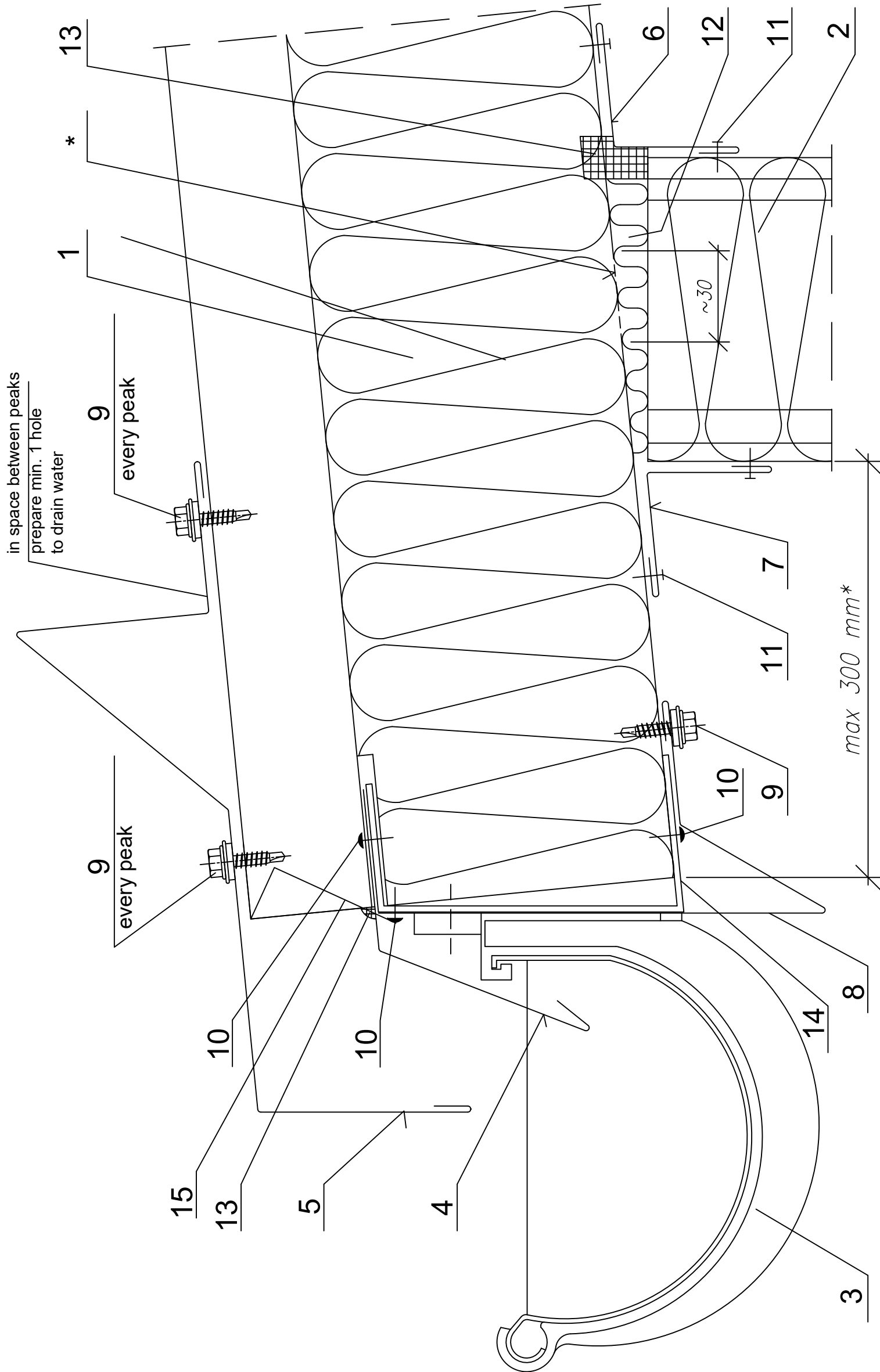


Data	Data zmiany	Oznaczenie szczegółu M04/S10	Nr rysunku	Zmiana
Opracował Ruukki	Zmiana		-	
Skala 1:2 1:2	Obiekt	Nr pliku P2001/003-00038		



1. Ruukki SP2C PIR.

2. Ruukki wall composite panel.

3. PCV gutter + gutter hook + joint elements.

4. EA1B11 drip flashing.

5. EA1B25 drip roof flashing.

6. EA1B30 lub EA1B39\*\* joint flashing.

7. EA1B31 lub EA1B38\*\* joint flashing.

8. EA1B37 drip roof flashing.
9. L03 fastener (every 333 mm).

10. Watertight rivet (every 300 mm).

11. Steel rivet (every 300 mm).

12. Loose mineral wool.

13. Permanently elastic sealing compound.

14. EA1B20 assembly flashing.

15. EA1B18 roof flashing .
- \* for structures with high requirements regarding thermal insulation facing gap is ~30 mm; in this case the maximum support length is 300 mm

\*\* for roof with inclination exceeding 20%